



Flat 231, Waterloo Quay Waterloo Road, Liverpool, L3 0BS

£210,000

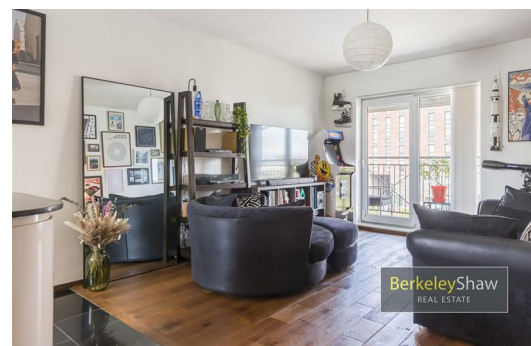
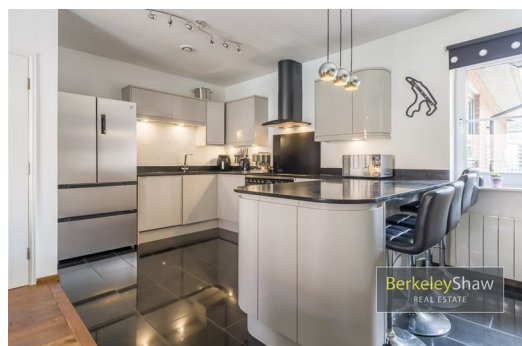
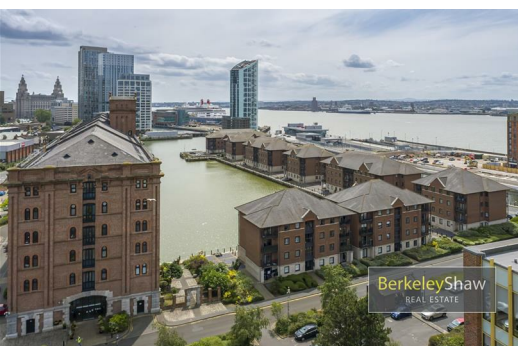
A Stunning Waterfront Apartment with Balcony Views Over Waterloo Dock
Two Bedrooms | Two Bathrooms | Allocated Parking | Third Floor | Prime Waterfront Location

Welcome to this beautifully presented two-bedroom third-floor apartment, ideally located in the sought-after Waterloo Quay development—just a short stroll from Liverpool City Centre and the vibrant Docklands.

Set in an enviable waterfront position, this apartment boasts panoramic views of Waterloo Dock, offering a tranquil yet connected lifestyle. The real showstopper is the private balcony, the perfect place to unwind with a coffee or glass of wine while soaking up the afternoon and early evening sun.

Step inside to a spacious entrance hall with two generous storage cupboards and solid wood flooring throughout the main living areas. The large open-plan living and dining area is flooded with natural light thanks to sliding UPVC doors that open out onto the balcony. This inviting space flows seamlessly into a well-equipped fitted kitchen, ideal for entertaining or quiet nights in.

The apartment offers two well-proportioned double bedrooms, including a master with en-suite shower room, plus a separate modern three-piece bathroom—ideal for guests or sharers.



Entrance hall

Open plan kitchen diner/living area

Bedroom 1

En-suite shower room

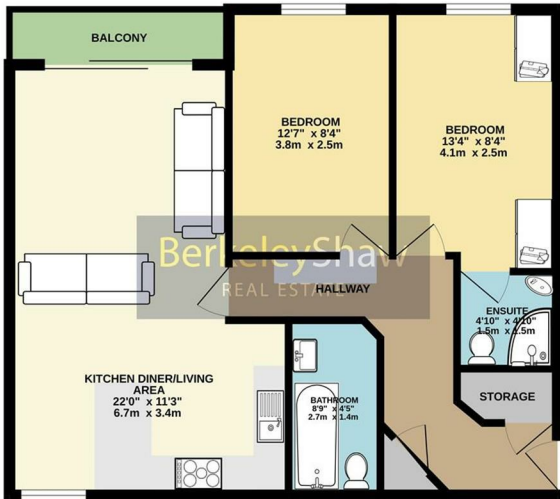
Bedroom 2

Bathroom

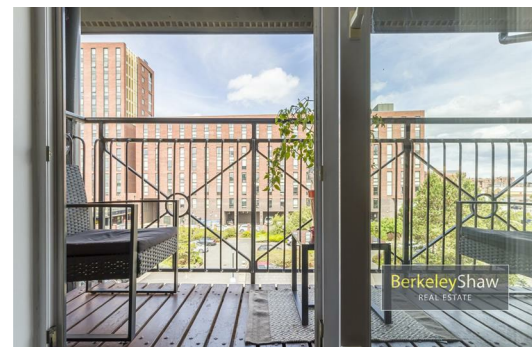
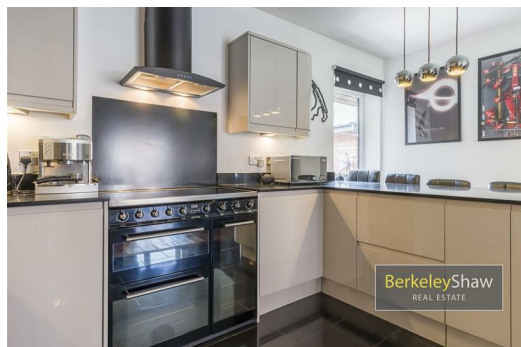
Energy Efficiency Rating		Current	Potential
Very energy efficient - lower running costs			
(92 plus) A			
(81-91) B			
(69-80) C			
(55-68) D			
(39-54) E			
(21-38) F			
(1-20) G			
Not energy efficient - higher running costs			
		69	72
England & Wales		EU Directive 2002/91/EC	

Environmental Impact (CO ₂) Rating		Current	Potential
Very environmentally friendly - lower CO ₂ emissions			
(92 plus) A			
(81-91) B			
(69-80) C			
(55-68) D			
(39-54) E			
(21-38) F			
(1-20) G			
Not environmentally friendly - higher CO ₂ emissions			
England & Wales		EU Directive 2002/91/EC	

GROUND FLOOR



Whilst every attempt has been made to ensure the accuracy of the floorplan contained here, measurements of doors, windows, rooms and any other items are approximate and no responsibility is taken for any error, omission or mis-statement. This plan is the applicant's property and should be used as such by the prospective purchaser. The services, items and appliances shown are not intended to be guaranteed as to their quantity or efficiency can be given. Please refer to the guarantee sheet with Energy CDRS.



Berkeley Shaw Estate Agents Limited.
Company No. 0784754

Berkeley Shaw Real Estate Limited.
Company No. 05206927

